



STEEL RAISED FLOOR BARE FINISH DS2000

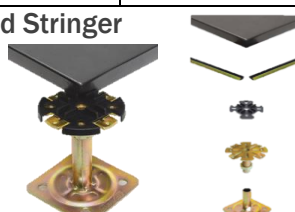
Panel Structure

Fully steel encapsulated with internal point welding at isotropic domes to ensure panel integrity. Isotropic underside sheet steel is ST14 formed under a molded press. Top sheet surface plate comprises of SPCC hard steel painted with epoxy resin and powder coat.

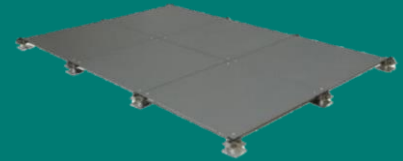
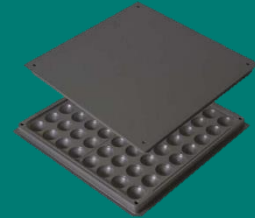
Panel core consists of a cementitious / calcium sulphate formula poured insitu into the point welded steel panel housing.

Advantage

High loading capacity with improved lateral stability. Non-Susceptible to humidity and moisture. Non-combustible and fully recyclable.

TYPE		DS2000 (2.0/1.5)
Panel Size		600mm x 600mm x 33mm
Core Density		1500 kg /m3
Concentrated Load	N	8900
	KG	907
Impact Load	N	800
Ultimate Load	N	26700
Uniform Load	N	46000
Rolling Load /N	10 times	6668
	10,000 times	5557
Reaction to Fire		A1 / Class 0 + 1
Weight per Panel	KG	17.00
Pedestal and Stringer 		Used in standard installations 100mm x 100mm x 2.5mm base plate M16 screw lock nut with secure engagement channels
Application		Specialist Applications and exceptionally heavy equipment requirements including Plant and Server Rooms. Panel ideal for HPL / Vinyl finish or with carpet tile application.

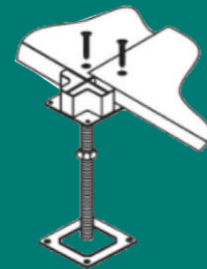
PRODUCT DATASHEET DEVAR - DS2000



MATCH IN ONE SQM :

- PANEL 2.78 PCS
- PEDESTAL 3.36 PCS
- SCREW 11.2 PCS

20FT GP CAPACITY: 450 M2



DEVAR HOLDINGS LIMITED

Tel: (852) 3108 2108
Fax: (852) 3108 2100

www.devargroup.com.hk
enquiries@devargroup.com.hk