



STEEL RAISED FLOOR BARE FINISH DS1250

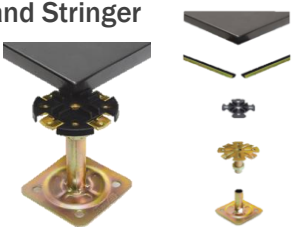
Panel Structure

Fully steel encapsulated with internal point welding at isotropic domes to ensure panel integrity. Isotropic underside sheet steel is ST14 formed under a molded press. Top sheet surface plate comprises of SPCC hard steel painted with epoxy resin and powder coat.

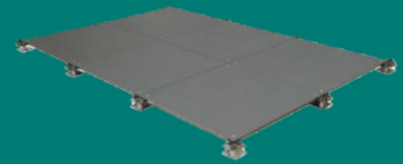
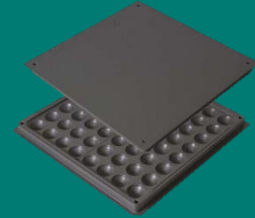
Panel core consists of a cementitious / calcium sulphate formula poured insitu into the point welded steel panel housing.

Advantage

High loading capacity with improved lateral stability. Non-Susceptible to humidity and moisture. Non-combustible and fully recyclable.

TYPE		DS1250 (1.2/1.0)
Panel Size		600mm x 600mm x 33mm
Core Density		1500 kg /m3
Concentrated Load	N	5560
	KG	567
Impact Load	N	780
Ultimate Load	N	16680
Uniform Load	N	33000
Rolling Load /N	10 times	5560
	10,000 times	4450
Reaction to Fire		A1 / Class 0 + 1
Weight per Panel	KG	15.80
Pedestal and Stringer 		Used in standard installations 100mm x 100mm x 2.5mm base plate M16 screw lock nut with secure engagement channels
Application		Plant and Server Rooms as well as High Density / populated commercial offices buildings. Panel ideal for HPL / Vinyl finish or with carpet tile application.

PRODUCT DATASHEET DEVAR - DS1250



MATCH IN ONE SQM :

- PANEL 2.78 PCS
- PEDESTAL 3.36 PCS
- SCREW 11.2 PCS

20FT GP CAPACITY: 505 M2



DEVAR HOLDINGS LIMITED

Tel: (852) 3108 2108
Fax: (852) 3108 2100

www.devargroup.com.hk
enquiries@devargroup.com.hk