



# STEEL RAISED FLOOR BARE FINISH DS1000

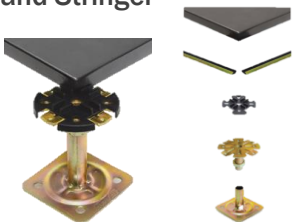
## Panel Structure

Fully steel encapsulated with internal point welding at isotropic domes to ensure panel integrity. Isotropic underside sheet steel is ST14 formed under a molded press. Top sheet surface plate comprises of SPCC hard steel painted with epoxy resin and powder coat.

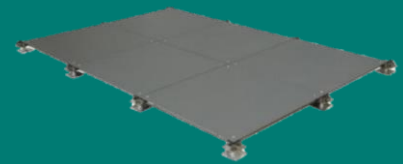
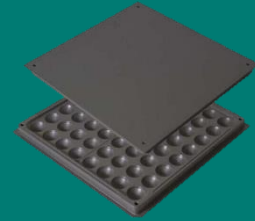
Panel core consists of a cementitious / calcium sulphate formula poured insitu into the point welded steel panel housing.

## Advantage

High loading capacity with improved lateral stability. Non-Susceptible to humidity and moisture. Non-combustible and fully recyclable.

TYPE		DS1000 (1.0/1.0)
Panel Size		600mm x 600mm x 33mm
Core Density		1500 kg /m3
Concentrated Load	N	4450
	KG	453
Impact Load	N	670
Ultimate Load	N	13350
Uniform Load	N	23000
Rolling Load /N	10 times	4450
	10,000 times	3560
Reaction to Fire		A1 / Class 0 + 1
Weight per Panel	KG	15
Pedestal and Stringer 		Used in standard installations 100mm x 100mm x 2.5mm base plate  M16 screw lock nut with secure engagement channels
Application		High Density / populated commercial offices buildings. Panel ideal for carpet tile, vinyl or other soft floor finish applications

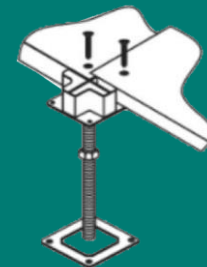
## PRODUCT DATASHEET DEVAR - DS1000



### MATCH IN ONE SQM :

- PANEL 2.78 PCS
- PEDESTAL 3.36 PCS
- SCREW 11.2 PCS

20FT GP CAPACITY: 524 M2



### DEVAR HOLDINGS LIMITED

Tel: (852) 3108 2108  
Fax: (852) 3108 2100

[www.devargroup.com.hk](http://www.devargroup.com.hk)  
[enquiries@devargroup.com.hk](mailto:enquiries@devargroup.com.hk)